

2241-43 Frederick Douglass Blvd

Southwest Corner of West 121st St



WE ARE PLEASED TO OFFER THE FOLLOWING RETAIL/OFFICE/MEDICAL SPACE FOR LEASE:

Space: Ground Floor: 2,287 sq. ft. (divisible)
Asking Rent: Upon Request
Frontage: 40 feet on Frederick Douglass Blvd
64 feet on West 121st St
Ceiling Height: Approximately 10 feet
Possession: July 1, 2025
Neighbors: Petit Poussins, Vintage Harlem, Starbuck's, Chase Bank
Comments:

- Newly renovated space
- Prime corner location
- Divisible to 1,100 sq. ft.
- Multiple means of egress

Neighborhood
Highlights:

- Located on the "Gold Coast" of West Harlem
- Vibrant neighborhood
- In close proximity to B, C subway lines

Matthew Gorman
212.251.0626
mgorman@aspire-associates.com

Christopher Bruggers
212.644.5015
cbruggers@aspire-associates.

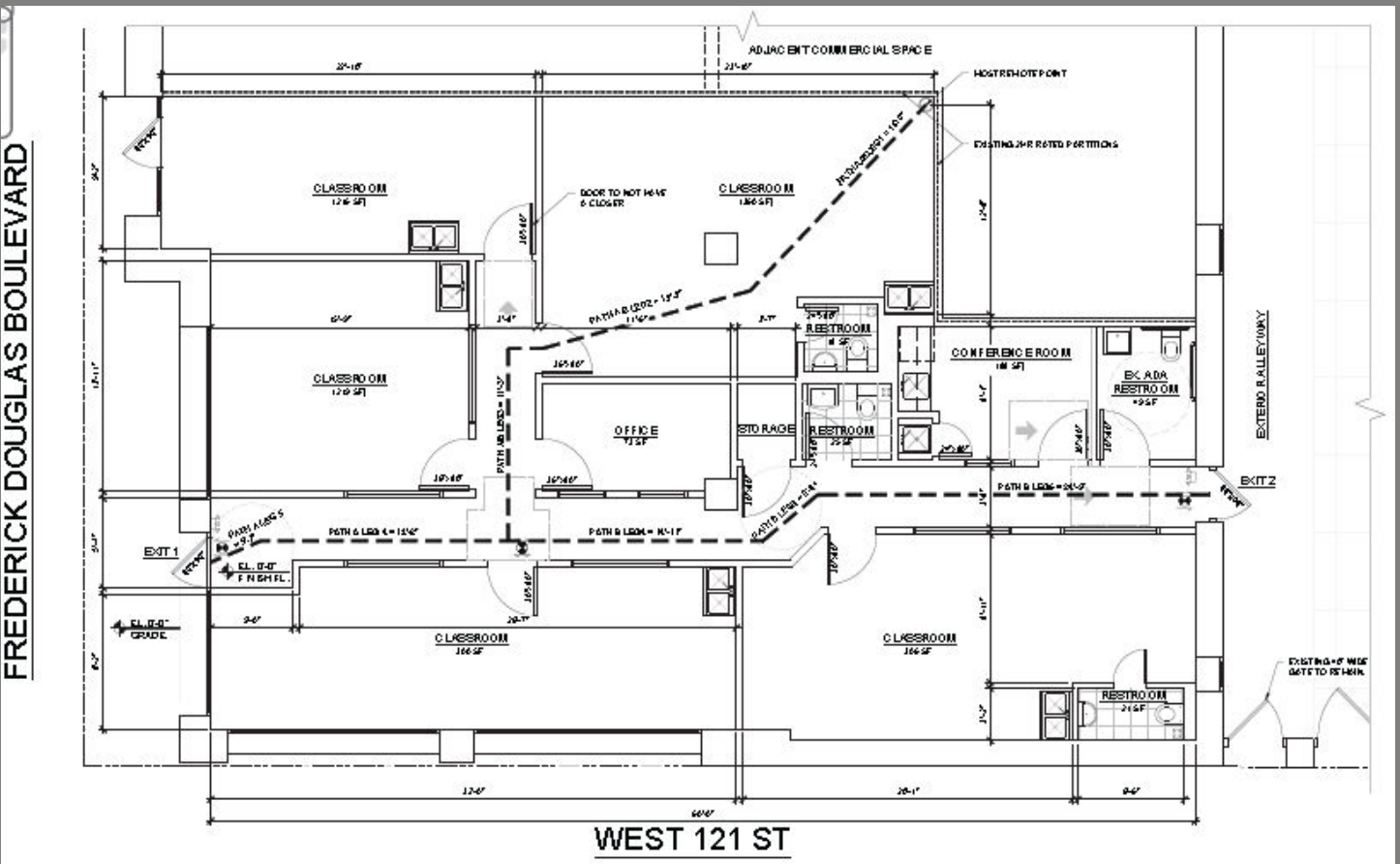
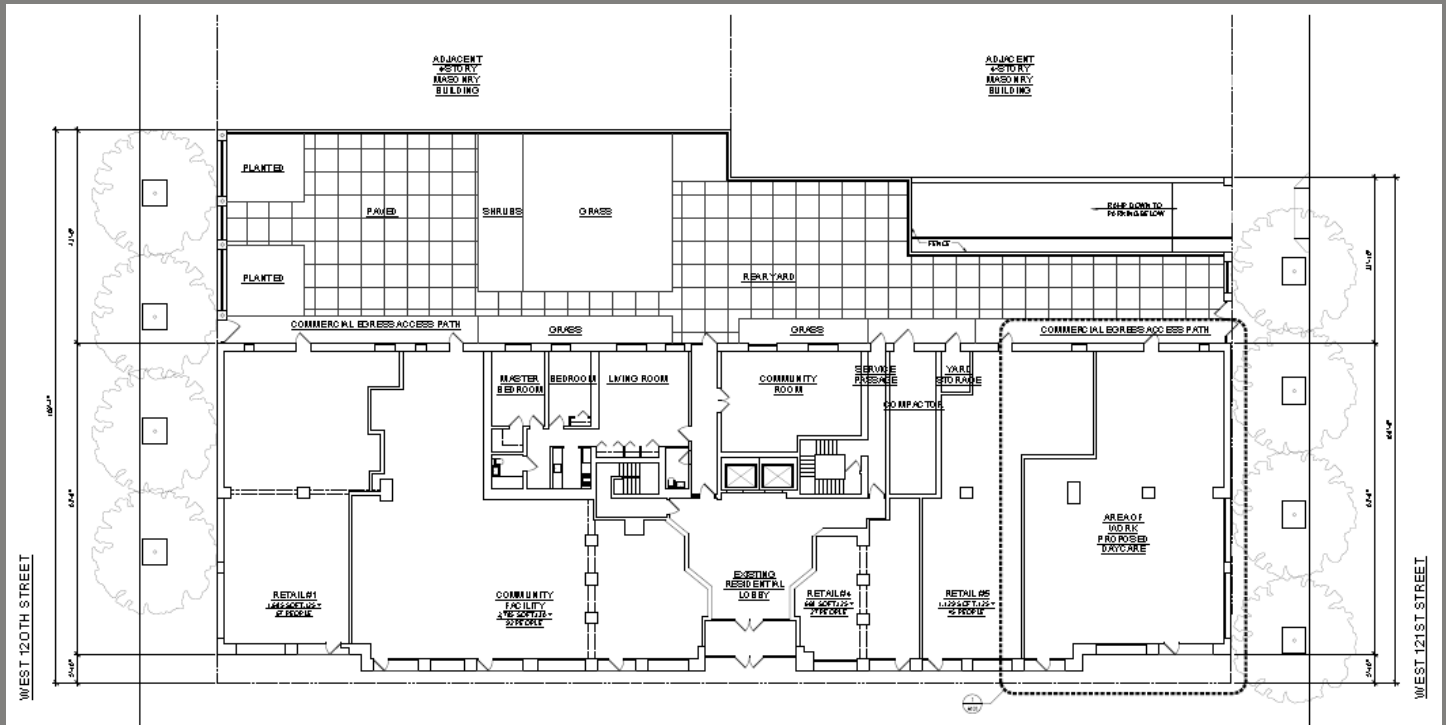
Exclusive Agent
ASPIRE
ASSOCIATES

Aspire Associates LLC - Licensed Real Estate Broker

The information is from sources deemed reliable, however, we have not verified its accuracy, and make no representation about it. It is submitted subject to the possibility of errors, omissions, change of price, rental or other conditions, prior sale, lease or financing, or withdrawal without notice.

2241-43 FREDERICK DOUGLASS BLVD

Southwest Corner of West 121st St



Matthew Gorman

212.251.0626

mgorman@aspire-associates.com

Christopher Bruggers

212.644.5015

cbruggers@aspire-associates.com

Exclusive Agent

ASPIRE
ASSOCIATES

Aspire Associates LLC - Licensed Real Estate Broker

The information is from sources deemed reliable, however, we have not verified its accuracy, and make no representation about it. It is submitted subject to the possibility of errors, omissions, change of price, rental or other conditions, prior sale, lease or financing, or withdrawal without notice.