

2239 Frederick Douglass Boulevard

between West 120th St and West 121st St



WE ARE PLEASED TO OFFER THE FOLLOWING RETAIL/OFFICE/MEDICAL SPACE FOR LEASE:

- Space: Ground Floor: 1,319 sq. ft.
Contiguous Ground Floor Expansion: 2,287 sq. ft.
- Asking Rent: Upon Request
- Frontage: Approximately 20 feet on Frederick Douglass Blvd
- Ceiling Height: Approximately 10 feet
- Possession: Immediate
- Neighbors: Petit Poussins, Spear Physical Therapy, Starbuck's, Chase Bank
- Comments:
 - Formerly occupied by Vintage Harlem
 - First time available in over 20 years
- Neighborhood Highlights:
 - Located on the "Gold Coast" of West Harlem
 - Vibrant neighborhood
 - In close proximity to B, C subway lines

Matthew Gorman

212.251.0626

mgorman@aspire-associates.com

Christopher Bruggers

212.644.5015

cbruggers@aspire-associates.

Exclusive Agent

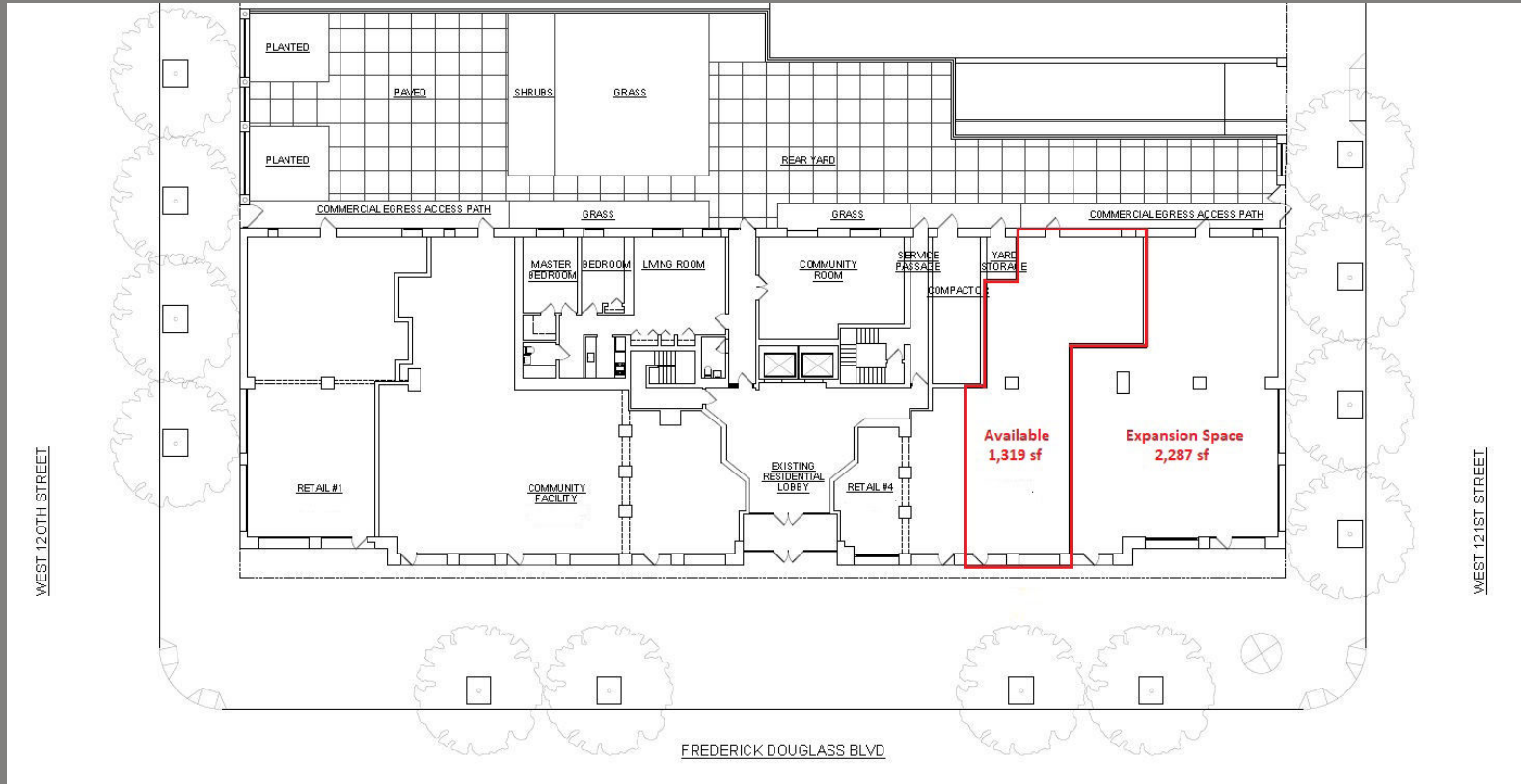
ASPIRE
ASSOCIATES

Aspire Associates LLC - Licensed Real Estate Broker

The information is from sources deemed reliable, however, we have not verified its accuracy, and make no representation about it. It is submitted subject to the possibility of errors, omissions, change of price, rental or other conditions, prior sale, lease or financing, or withdrawal without notice.

2239 FREDERICK DOUGLASS BLVD, NEW YORK, NY

between W 120th St and West 121st St



Matthew Gorman
212.251.0626
mgorman@aspire-associates.com

Christopher Bruggers
212.644.5015
cbruggers@aspire-associates.com

Exclusive Agent
ASPIRE
ASSOCIATES