

13 East 16th Street

North Side of East 16th Street between Union Square West and Fifth Avenue



WE ARE PLEASED TO OFFER THE FOLLOWING SPACE FOR LEASE:

Space: Ground Floor: 1,800 sq. ft.
Lower Level: 1,243 sq. ft.
Asking Rent: Upon Request
Frontage: 15 ft. on East 16th Street
Ceiling Height: Approximately 12.5 feet
Possession: Immediate

Neighbors: Union Square Green Market, Whole Foods, Petco, Paragon Sports, Bonobos, Warby Parker, Zara, Allbirds, Sephora, and Vans

Comments:

- Fully built; formerly occupied by Agnes B.
- Short or long-term leases considered

Neighborhood Highlights:

- Located within a block of Union Square Park and Fifth Avenue retail shops
- Steps from the entrance to 14th St/Union Square subway lines

Matthew Gorman

212.251.0626

mgorman@aspire-associates.com

Christopher Bruggers

212.644.5015

cbruggers@aspire-associates.com

Exclusive Agent

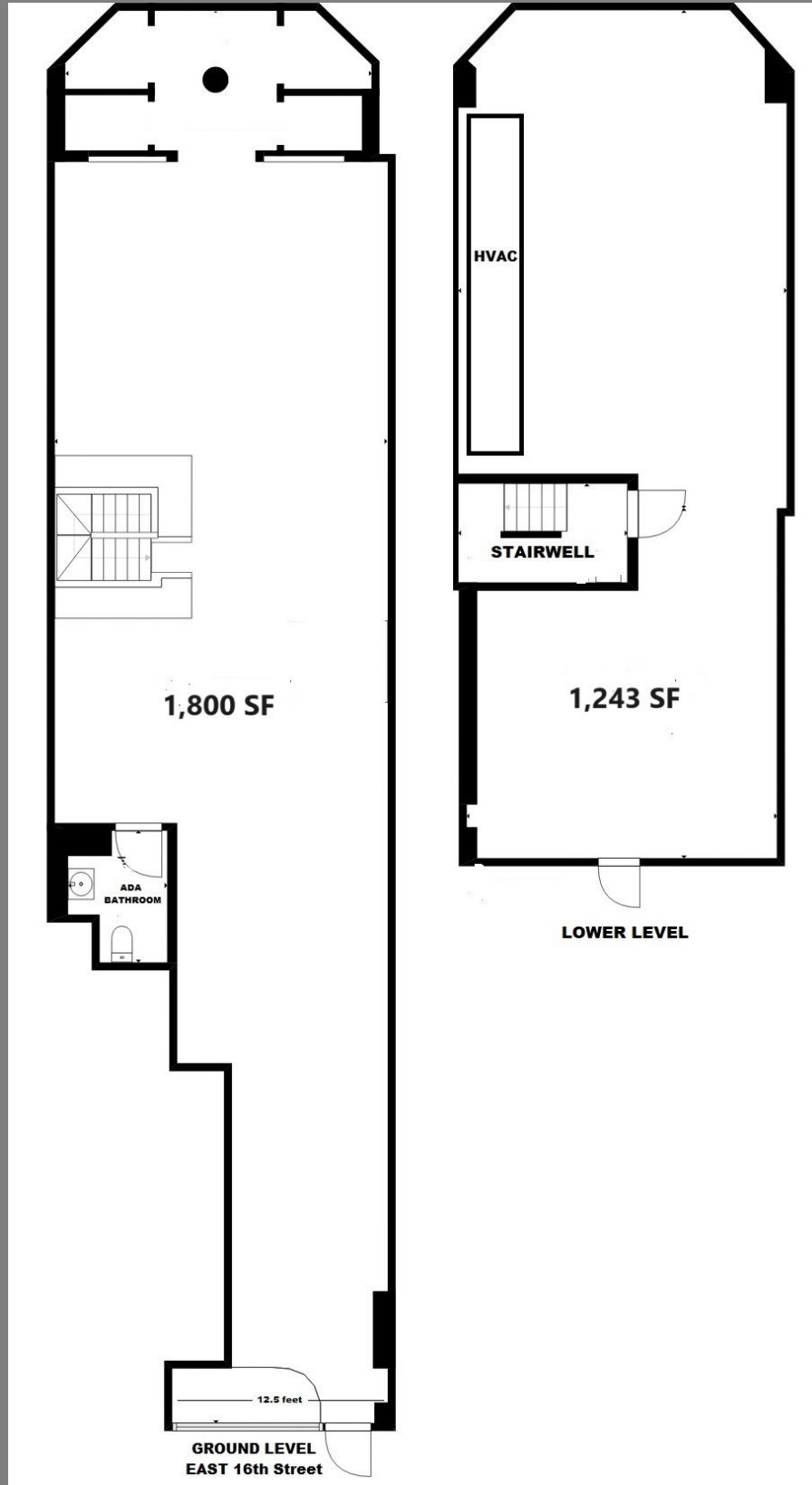
ASPIRE
ASSOCIATES

Aspire Associates LLC - Licensed Real Estate Broker

The information is from sources deemed reliable, however, we have not verified its accuracy, and make no representation about it. It is submitted subject to the possibility of errors, omissions, change of price, rental or other conditions, prior sale, lease or financing, or withdrawal without notice.

13 EAST 16TH STREET, NEW YORK, NY

North Side of East 16th Street between Union Square West and Fifth Avenue



Matthew Gorman

212.251.0626

mgorman@aspire-associates.com

Christopher Bruggers

212.644.5015

cbruggers@aspire-associates.com

Exclusive Agent

ASPIRE
ASSOCIATES

Aspire Associates LLC - Licensed Real Estate Broker

The information is from sources deemed reliable, however, we have not verified its accuracy, and make no representation about it. It is submitted subject to the possibility of errors, omissions, change of price, rental or other conditions, prior sale, lease or financing, or withdrawal without notice.