

2229 Frederick Douglass Boulevard

Northwest Corner of West 120th Street



WE ARE PLEASED TO OFFER THE FOLLOWING RETAIL/OFFICE/MEDICAL SPACE FOR LEASE:

Space: Ground Floor: 1,850 sq. ft.
Asking Rent: Upon Request
Frontage: 25 feet on Frederick Douglass Blvd
63 feet on West 120th St
Ceiling Height: Approximately 10 feet
Possession: Arranged
Neighbors: Petit Poussins, Vintage Harlem, Starbuck's, Chase Bank
Comments: • Currently occupied by Theradynamics Physical Therapy
• Prime corner location
Neighborhood Highlights: • Located on the "Gold Coast" of West Harlem
• Vibrant neighborhood
• In close proximity to B, C subway lines

Matthew Gorman

212.251.0626

mgorman@aspire-associates.com

Christopher Bruggers

212.644.5015

cbruggers@aspire-associates.

Exclusive Agent

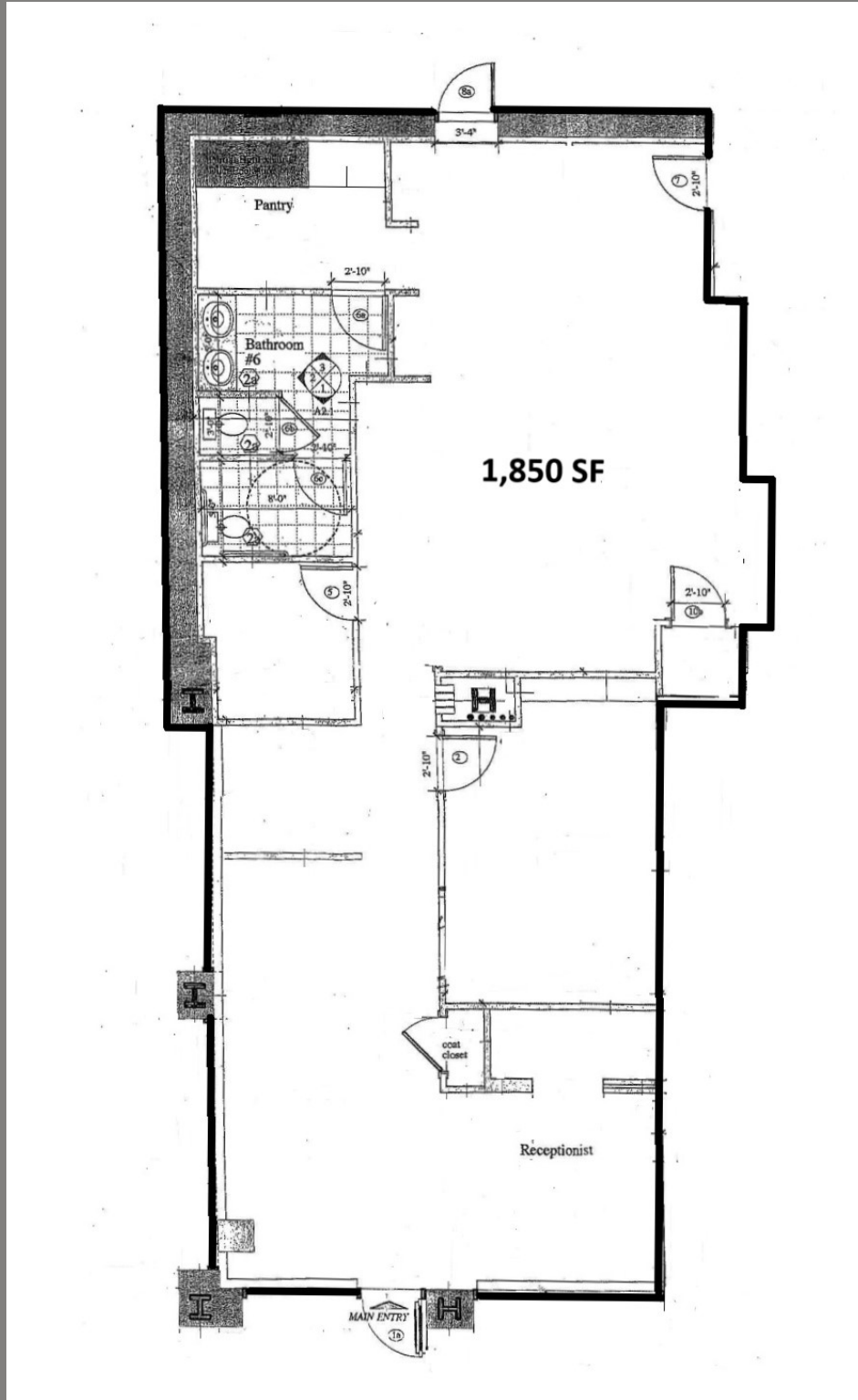
ASPIRE
ASSOCIATES

Aspire Associates LLC - Licensed Real Estate Broker

The information is from sources deemed reliable, however, we have not verified its accuracy, and make no representation about it. It is submitted subject to the possibility of errors, omissions, change of price, rental or other conditions, prior sale, lease or financing, or withdrawal without notice.

2229 FREDERICK DOUGLASS BLVD

Northwest Corner of West 120th Street



Matthew Gorman

212.251.0626

mgorman@aspire-associates.com

Christopher Bruggers

212.644.5015

cbruggers@aspire-associates.

Exclusive Agent

ASPIRE
ASSOCIATES

Aspire Associates LLC - Licensed Real Estate Broker

The information is from sources deemed reliable, however, we have not verified its accuracy, and make no representation about it. It is submitted subject to the possibility of errors, omissions, change of price, rental or other conditions, prior sale, lease or financing, or withdrawal without notice.